

# 2 COMMON EDITING JOBS USING SEDS DIGITIZING/EDITING SYSTEMS OR E.D.TOOLS

In this guide, we've included some examples to help demonstrate the uses of iFont, PowerEdit, or your SEDS lettering or digitizing system.

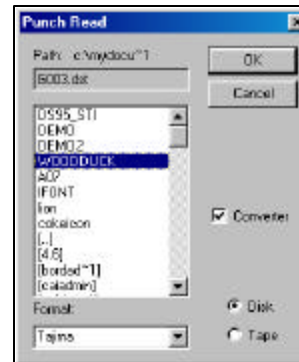
## EXAMPLE 1: ADDING TEXT TO AN EXISTING STITCH FILE

A common use for lettering programs is adding text to an existing stitch file. In this example, we'll use iFont or SEDS to load in such a file, prepare it and add arc some text into the design. We'll then set it up to sew on a pique knit shirt.

### 1.1 Read in the File

To read in stitch files from machine format, press the letter "R" in your keyboard, calling up the Punch Read dialog box shown on the right. Click on the dot beside "Disk" to automatically begin the search for Tajima (.dst) files, or choose an alternate format from the pulldown menu at the bottom.

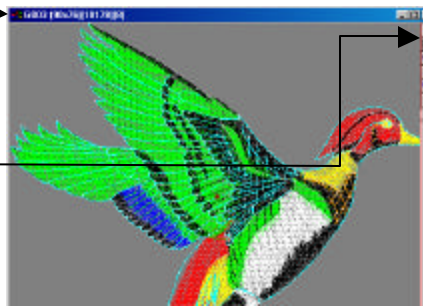
Browse through the directories [enclosed in brackets like this] by double-clicking on them. Stitch files will appear at the top of the list. When the one you wish to read in appears, highlight it and click OK. The file will load into your design window, as shown below.



Design name, size in mm, # colors, stitch count

Grid and ruler tools (right-click to view options)

Other viewing controls

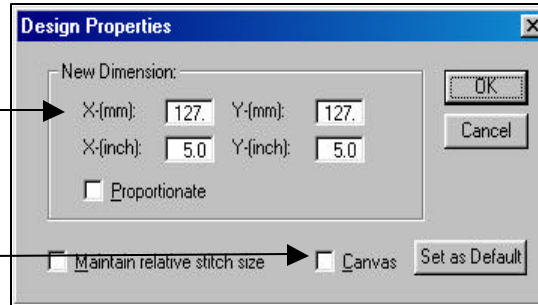


## 1.2 Add Working Room Around the Design

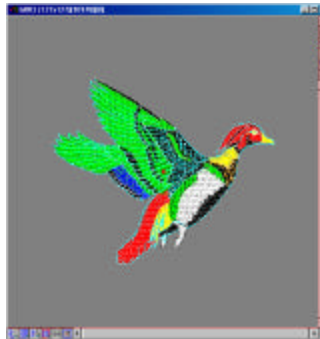
The program reads stitch files in with a working area just large enough to fit the stitches in the design. To add more working room around its edges, go to the Edit pulldown menu across the top of the program and choose Properties. The dialog box shown below appears. Follow the directions below to add the extra area.

1. Enter larger numbers in inches or mm here.

2. Check "Canvas"



3. Click OK. The extra area will be added around the edges of the design window, as shown on the right.



## 1.3 Some Navigation Aids to Help Out

Before continuing forward, try out these helpful navigation tools to aid in viewing your file, whose locations are spotted at the bottom-left corner of the design window:



**Ruler Tool** – an inch or millimeter ruler can be activated by right-clicking on this tool and choosing from the menu that appears.

**Grid** – For more exactness and a better idea of letter placement, you can also activate a grid (whose size can permanently set to your preferences by going to Edit...Options). The views on the next pages show the grid activated.



**Zooming In and Out:** You can zoom in by drawing an area into the thumbnails window, and zoom out using Whole View (shown on the left). Additionally, SHIFT-D toggles the display between the current zoom and an accurate 1:1 magnification of the stitch file (you'll need to calibrate your screen)

F10 - This toggles simulation view on and off.

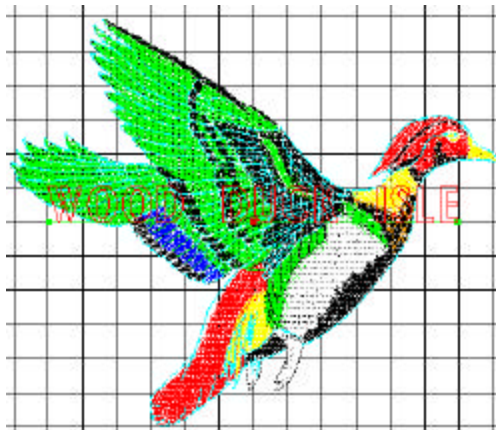


#### 1.4 Enter Text, Choose a Font

Click on the icon shown on the left and enter text, as described in 3.2 on page 5 of this manual. As recommended, use the boldface option. The size of the font preview is controlled by the point size in the TrueType Font dialog box; note that this does NOT adjust the sewing size of the letters; we'll show you this momentarily.

#### 1.5 Placing and Manipulating the Outlines

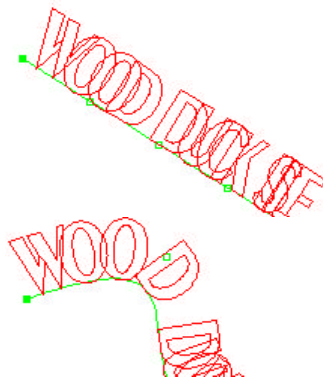
The outlines of your text will appear in the center of your file, as shown below. You can move the text by left-clicking near it (click and release), and moving your mouse, and then clicking again to set it down. You can try this as much as you like until you get comfortable.



Note – do NOT press your right mouse button until ready to generate stitches.

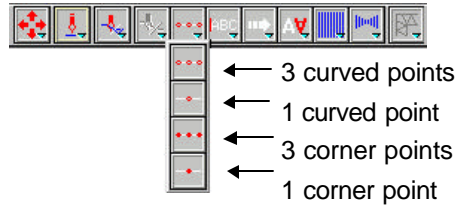
#### Preparing to Arc the Text

As you'll see on the following pages, we'll place the text in an arc around the head of the bird. To do so, first find the end points of the green line that appears under the text, and move them to the points where the text will start and end, as shown on the right.

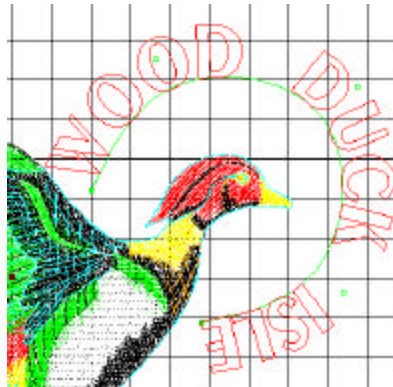


Then, you can move the text into an arc by moving the small, hollow squares in the *middle* of that green line, as shown on the right. There are 3 points, which allow you a great deal of flexibility for creating complex curves.

You can also reduce the center points to 1 point using the tools as shown on the right (found on the top-right corner of the program window), making it easier to curve in some situations.



With the 3 curved points, you can put the text in almost a full circle, as shown on the right.

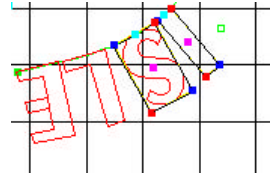


**Kerning the Text and Other Modifications**

To modify a character or several characters at the same time, left-click on the *outline* of that character, causing a box to appear around it, with several multi-colored points, as shown on the right. Each point performs a different function:

Center pink – kerning  
 Corner dark blue – rotate

Corner red – resizes  
 Light blue – moves

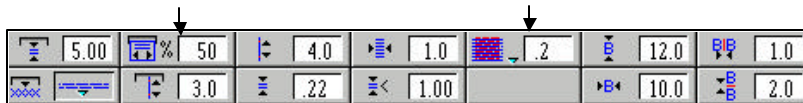


**11.16 Enter Appropriate Stitch Settings**

Finally, before generating stitches, we've adjusted the settings to optimize for the pique knit we mentioned earlier.

**Underlay Gap** – we've used the full 50% to keep the underlay from the edges of the top stitching.

**Pull Compensation Value** – By right-clicking on the pink field, you'll see 2 options – 1 for percentage, and 1 in millimeters. In this case, we've chosen 0.2mm additional satin width to compensate for loss in width due to pull.

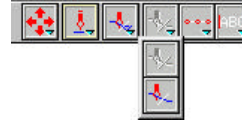


**Underlay Type** – We've used the 2-line underlay here with an appropriate underlay gap setting.

**(Span) Stitch Density** - normal density is 0.20, but we've lightened it slightly to 0.22 because the lettering is barely 1/4" high.

### If You Want Trims Between Letters

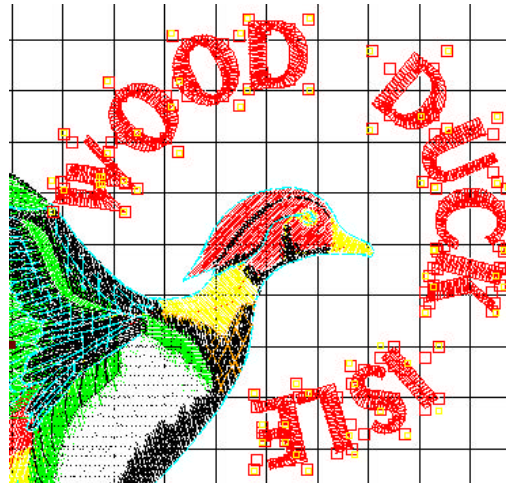
Before generating stitches, you can right-click on the “Trim Off” icon in the Mode Control group at the top-right corner of the program window, and choose Trim Off. (shown on the right). If you do this, however, also ensure that the function to its left, is swapped to “Lock Stitch On”.



### 11.17 Generate Stitches!

To generate stitches, right-click once in the design window, which will show the connection points between the letters in green and red dots. Then, right-click again to generate the stitches, as shown on the right.

If you wish to get a better view, press “T” on your keyboard to swap to Point Selection mode, and left-click on any empty area in the design window to deselect all.



You can also view your stitches in simulation mode by pressing F10, which also toggles the simulation off.

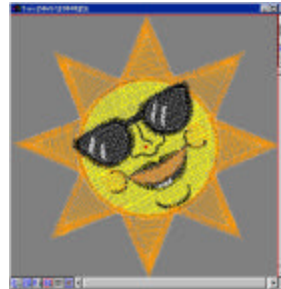
## EXAMPLE 2: MERGING AND EDITING 2 DESIGNS

In this example, we'll use PowerEdit to merge and then edit 2 designs. You may not encounter many jobs that require all the steps involved, but this exercise was designed to demonstrate various tools that may help you with similar or smaller tasks.

### Overall Plan

We've outlined the steps that will be covered on the following pages here to combine the 2 designs shown below.

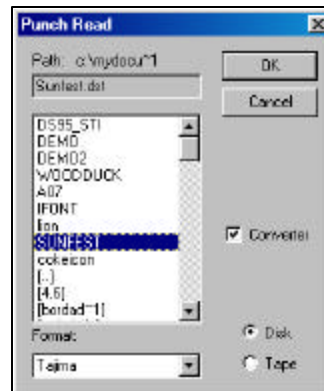
- 2.1 Import (read in) both designs'
- 2.2 Enlarge the dimensions of the design *receiving* the stitches from the other
- 2.3 Cut and manipulate the stitches in the receiving design
- 2.4 Copy and paste the stitches from the donor design into the receiving design
- 2.5 Move the pasted stitches into their final location



### 2.1 Import the First (recipient) Design

To read in the designs to be merged, press the letter "R" in your keyboard, calling up the Punch Read dialog box shown on the right. Click on the dot beside "Disk" to automatically begin the search for Tajima (.dst) files, or choose an alternate format from the pulldown menu at the bottom.

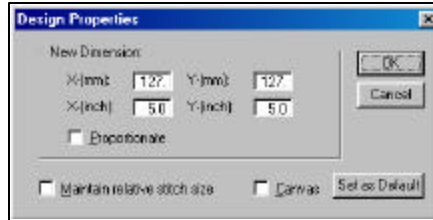
Browse through the directories [enclosed in brackets like this] by double-clicking on



them. Stitch files will appear at the top of the list. When the one you wish to read in appears, highlight it and click OK. The file will load into your design window, as shown on the right.

## 2.2 Enlarge the Design Canvas

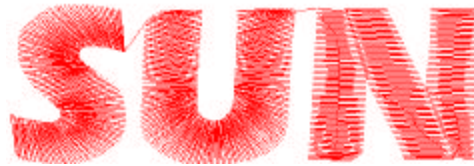
Once imported, enlarge the design to provide enough workspace to accept both designs. To do so, go to the Edit pulldown menu at the top of the program and choose Properties. The dialog box on the right will appear, with the design size in both mm and inches. Enter larger dimensions in either of the two, check Canvas, and click OK. You'll see the additional space immediately.



## 2.3 A Little Editing First

The intention of this exercise is to replace the “U” in SUN with the stitches in the second design.

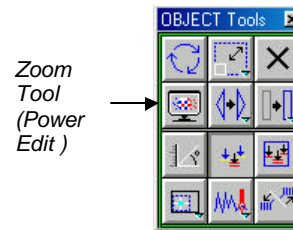
Before that can be done, we'll do a little cutting – something you'll find necessary in most expanded designs (i.e. EXP, DST, FDR, etc.). This is because different elements of a design that are of the same color, and that sew together in sequence, like the letters in the word SUN, will usually read in joined together as a single stitch group.



### Cutting Procedure – can be performed in PowerEdit or SEDS.

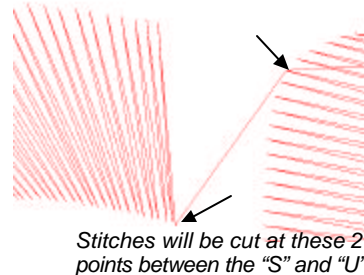
1. **Select the stitches.** The first step in any editing task is to select the stitch group. To do so, press the letter *T* on your keyboard to enter selection mode, and click directly on any of the stitches in the word SUN. You'll see 4 yellow selection markers appear at its corner indicating that the stitch block is selected. If not, just keep clicking until they appear.

2. **Zoom In.** Next, zoom in to the area you want to cut closely enough to see the specific stitch you wish to cut. To do this, click on the Zoom tool, shown on the right, then draw a rectangle around the area in which you wish to zoom. The design window will jump instantly to that area.

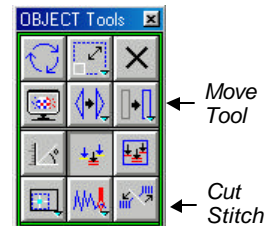


3. **Press X.** Before doing any cutting, press the letter "X" on your keyboard. This will fade non-selected stitches to a darker color. You'll see in a moment why this makes things easier.

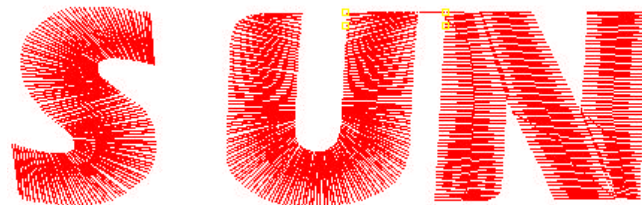
4. **Cut.** Press Cut Stitch in the Object tools to enter cutting mode. Stitch groups must be cut *right at the needlepoint*, so move your cursor exactly on the needle point you need to cut, and click. Because you're in "X" mode (from step 3 above), the stitches will darken when the cut is successful. If they remain in color, just click again until they do. Then, get out of "X" mode by pressing the letter "X" again.



5. **Cut again.** As can be seen on the previous page, you may have to cut in 2 places to separate 2 sections and a "tail" that joins them. Simply repeat the procedure again if this is necessary in your design. To delete the tail, we select it as in step 1 above, and press the DELETE key on the keyboard.



**Move the stitches you've cut.** In our exercise, we'll open up the space between the "S" and "N" by moving the "UN". To do so, we select the "UN" as we did in step 1 of the cutting procedure above. Then, we click on the Move tool shown above. Finally, we click anywhere near or on the selected stitch group to pick it up, move it, then click again to set it down.



**Cut the "U" from the "N" and Delete.**

We can repeat the procedures above for cutting to separate, then delete the "U" from the "N".



**2.4 Merge the 2 Designs.** To merge the designs, the second design is opened using the Punch Read dialog box (call it up by pressing "R") so that both are open on the screen. Then, we follow the short procedure below.

**Steps to Merge**

1. **Select the stitches of the "donor" design.** Since in our example we'll be copying the entire design, we'll use the Windows command keys CTRL-A to select the entire design. Yellow selection markers will appear all over the design when this is done.
2. **Edit.Copy.** To copy the "donor" stitches into the Windows clipboard, go to the Edit pulldown menu and choose Copy (or, press CTRL-C).
3. **Prep the "receiving" design.** Click on the receiving design to make it the active window. Make sure no stitches are selected. If there are, press the letter "T" to enter selection mode again, and click on any empty area in the design, clearing off any selection markers.

4. **Edit:Paste.** Go to the Edit pulldown menu and choose Paste.  
You'll see 4 options:
  - Before selection** (puts in sequence before any selected stitches)
  - After selection** (puts in sequence after any selected stitches)
  - Before Document** (puts in sequence before all the stitches in the receiving design)
  - After Document** (puts in sequence after all the stitches in the receiving design)

We want the sun design to sew on top of the letters, so we'll choose the last option.

5. **Move the New Stitches Into Place.** PowerEdit places the new stitches at the upper-left corner of the receiving design. To move them, click on the Move tool (shown 2 pages back) and click in the design window to pick up the new stitches. Move them, then click again to set them.



The results of our efforts are shown below – a demonstration of how PowerEdit can create a fresh conce



Using the steps on the previous pages, the last "0" in "2000" can be deleted. Then, the design can be imported into iFont if you have E.D.Tools, (or if you have an SEDS design system, imported directly into the program( and the number "1" added to change the date. To do so, we first save the file we created by going to File and choosing Save and giving the design a name. This saves the file in an EDF format. If we were to export the design to sew as it is, press "W" for Punch Write and follow the procedure on page 43 of this manual. To perform the additional work shown below, close PowerEdit, launch iFont, go to File, then Open, open the design, and perform the necessary changes. Or if you have an SEDS design or punching system, just choose File..Open to open the design and perform the editing.

