

TECH TIPS

For Texmac **SOLO** Direct Garment Printer

ADJUSTING INK OUTPUT – White Ink

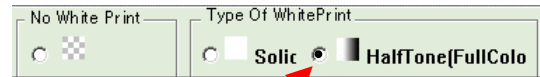
In SOLO's VARIO RIP software, you can adjust the amount of white ink printed for the underbase layer used for printing dark shirts. and Black on a selected color profile – giving you flexibility for different kinds of printing environments, or even allowing some level of color adjustment. You can even save your adjusted profile for re-use later. Here are the directions:

1. **Go to Step 1 (OpenFile) or Step 2 (Design)**. If the software is at step 3 (Print Preview) or 4 (Print), adjustments will not affect the current job to be printed.



Be sure VARIO is at Step 1 or 2.

2. **Choose a setting to generate a white underbase in Step 2 (Design)**. For most dark shirts, the “HalfTone” setting works well, and uses less ink.

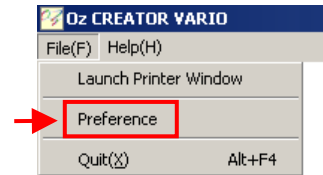


Select to generate a HalfTone white underbase

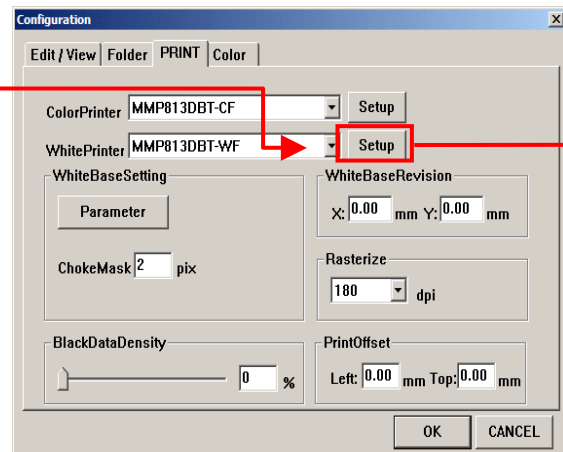
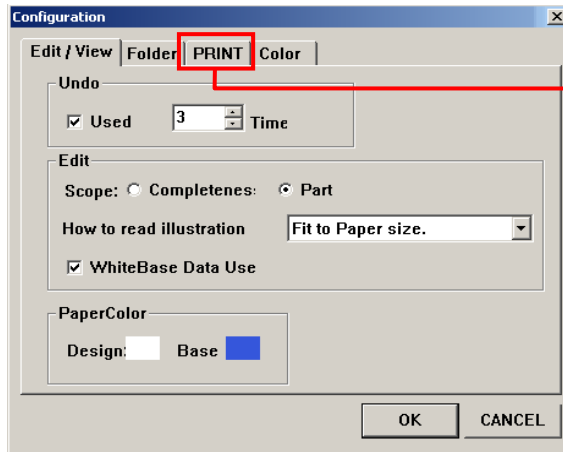
3. **Access the dialog box to set color printer preferences.**

Follow the steps below.

- a. **Click on FILE, then Preference** – as shown on the right, opening the dialog box in (b) below.



- b. **Click on the Print tab, as shown below left, showing the printer selector window. Click on Setup** next to the WhitePrinter selector. You'll now see the Preferences for color output (bottom right).



- c. **Adjust white ink level from 1 to 16.**

This adjusts the amount of white ink output in the underbase.

Recommendations for White Ink Level:

With a properly pre-treated shirt, you only need just enough white ink to provide good coverage. (with Vario version 1.0203D, around 10 or 12). Excess ink increases cost and increases curing time, and can cause the color layer to “fade” into the white layer during curing. And when the white output is set just high enough, there is no compromise on coverage, brilliance or contrast.

