

TECH TIPS

For Texmac **SOLO** Direct Garment Printer

ADJUSTING INK OUTPUT – Color Ink

In SOLO's VARIO RIP software, you can adjust the levels of ■ Cyan, ■ Magenta, ■ Yellow, and ■ Black on a selected color profile – giving you flexibility for different kinds of printing environments, or even allowing some level of color adjustment. You can even save your adjusted profile for re-use later. Here are the directions:

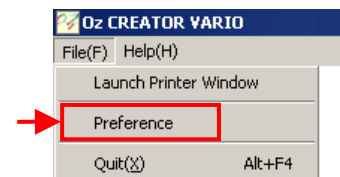
1. **Go to Step 1 (OpenFile) or Step 2 (Design)**. If the software is at step 3 (Print Preview) or 4 (Print), adjustments will not affect the current job to be printed.



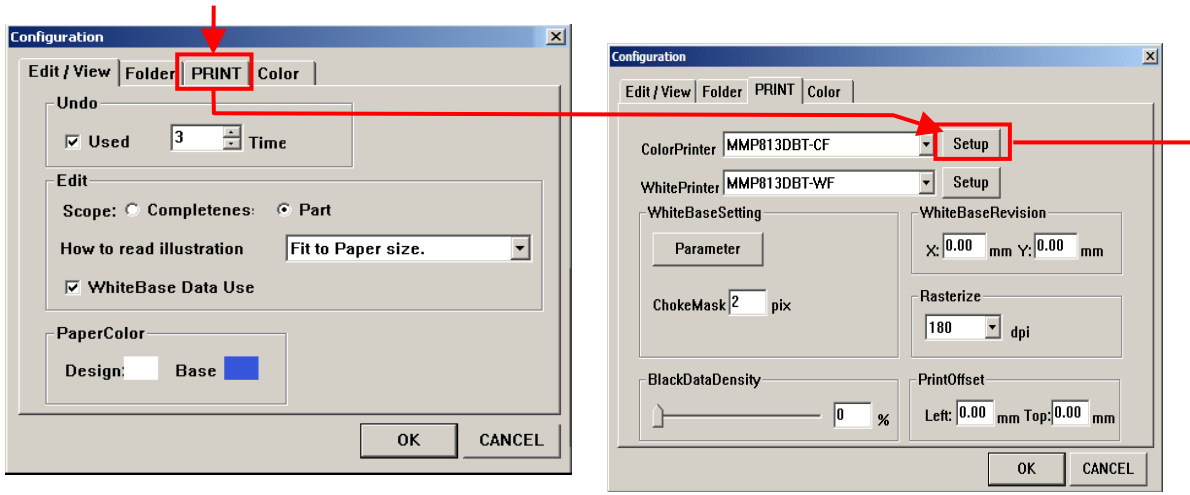
Be sure VARIO is at Step 1 or 2.

2. **Access the dialog box to set color printer preferences.** Follow the steps below.

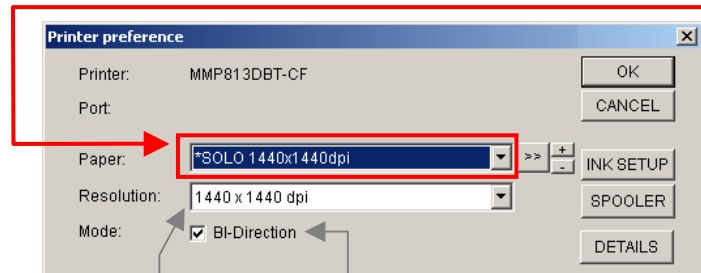
- a. **Click on FILE, then Preference** – as shown on the right, opening the dialog box in (b) below.



- b. **Click on the Print tab, as shown below left, showing the printer selector window. Click on Setup** next to the ColorPrinter selector. You'll now see the Preferences for color output (bottom right).



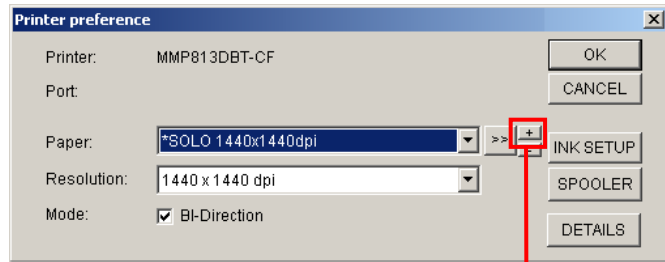
- c. **Make sure the correct color profile is selected.** Select this next to the "Paper" setting. As of VARIO version 1.02.03D, this should be ***SOLO 1440x1440dpi**, as shown on the right.



Select 1440 x 1440 dpi

Select Bi-Directional for greater speed, un-check for crisper output.

3. **Make a copy of the selected color profile, and set your preferences.**
Do this by clicking on the + symbol next to the selected profile. This allows you to edit the settings of the color profile in the dialog box that will appear, shown below.



4. **Make any adjustments and click OK.**
The directions on what can be done are illustrated below.

Type a name for your new profile here. If not, VARIO gives it the same name as the original, but adds a "+" to give it a unique identifier. This new profile automatically appears in the drop-down menu with the original profiles.

Ink color output adjustment: You can adjust color ink output here. (As of the version 1.0203D of the VARIO software, the default 100% setting is a good default, although some operators are increasing this amount for white shirts (creating a named version of the profile for this purpose.)

