

TECH TIPS

Setting up your HCD machine on a HAPPY Machine LAN

(network must be set up for HAPPY machines only and cannot include PC's other than the "server" PC that runs the HAPPYLAN software)

Required Hardware:

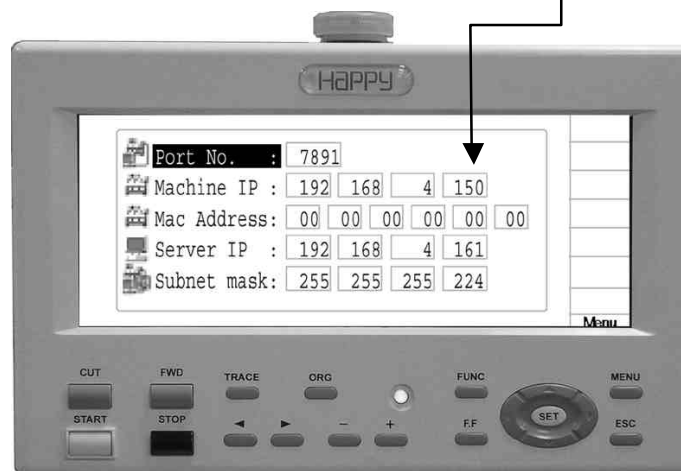
- HCD or HCS Voyager machine with color LCD monitor
- Windows-based PC (preferably Windows 2000 or Windows XP) with an unused network (LAN) port
- Category 5-grade Network hub or switch with enough ports to accommodate the number of machines you intend to network. (available at most computer hardware stores). Do NOT use a router! Can buy hubs up to 8 ports. More than 8 ports, switches available at least up to 64 ports.
- One category 5 Network patch cable (can be Cat 6 if need be) to connect between PC and hub/switch plus one additional category 5 patch cable for each HCD or HCS Voyager machine you intend to network. It is possible to network combinations of HCD and HCS machines at the same time.

1. Preparing Your HCD or HCS Voyager Machine

Set an IP address by:

- Power on your HCD machine, press MENU and use the arrow keys to select OTHER and press SET.
- Arrow down to NETWORK and press SET.
- Arrow down to Machine IP. Leave the first numerical boxes the same

192 168 1 10
Leave these at 192 168 1 But change this 4th number to a value between 10 and 254. This is the machine's unique ID on the network.



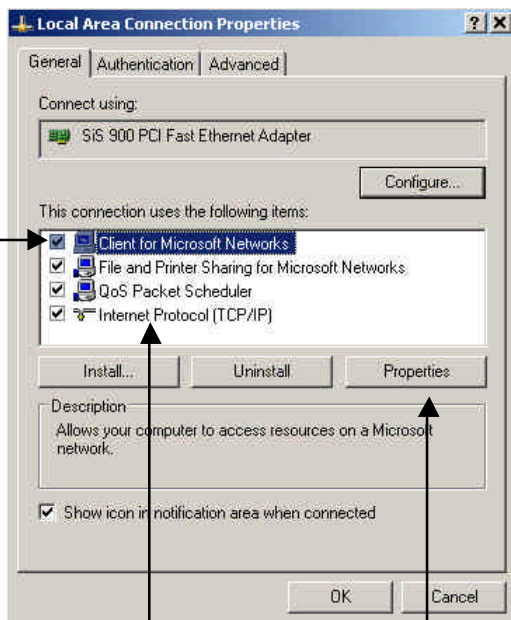
- Press ESC until you return to the main sewing screen, then shut down your HCD machine from the FUNC menu.

(Continued next page)

Setting up a PC as a HAPPY LAN Server

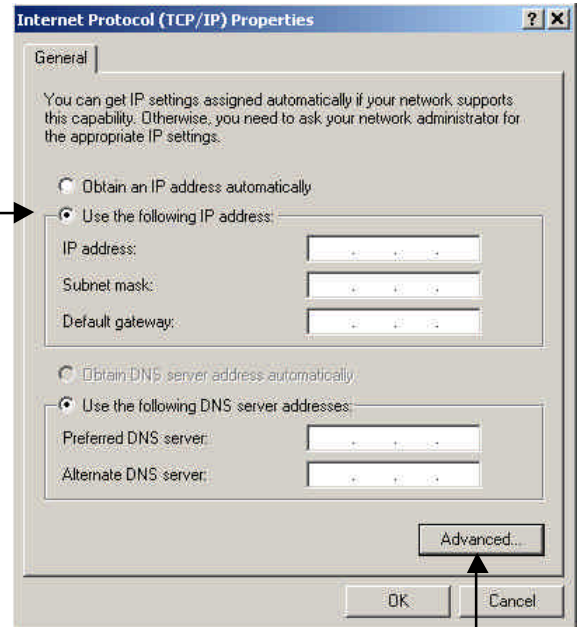
(Reminder: The network jack on the PC that is used as the HAPPY machine server cannot be connected to any other PC network. If you wish to keep the designated HAPPY LAN server PC also on an existing office network, an additional LAN card may be installed into that PC so and set up for that network, or for the HAPPY machine LAN.)

1. Adjust network connection. Go to START...CONTROL PANEL... NETWORK. Right-click on your Local Area Network and choose Properties. The dialog box below should appear. Follow the steps shown.



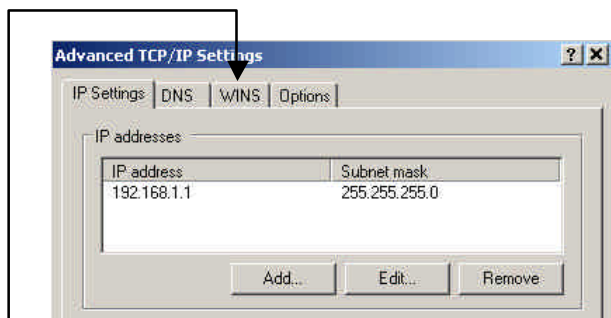
1. Un-check "Client for Microsoft Networks."

2. Highlight TCP/IP and click on Properties

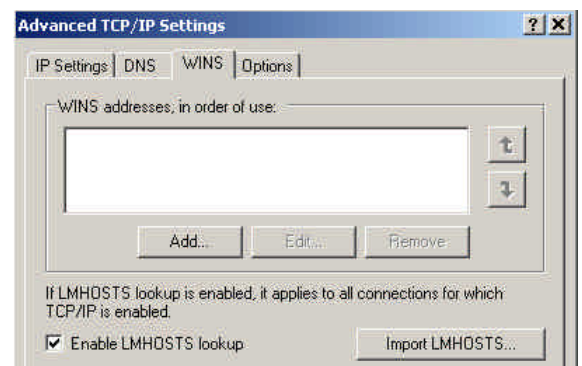


3. Check "Use The Following IP and enter 192.168.1.1 for the IP, and Subnet mask use 255.255.255.0. Leave everything else on this page blank.

4. Click ADVANCED....



5. Check "Use The Following IP and enter 192.168.1.1 for the IP, and Subnet mask use 255.255.255.0. Leave everything else on this page blank.

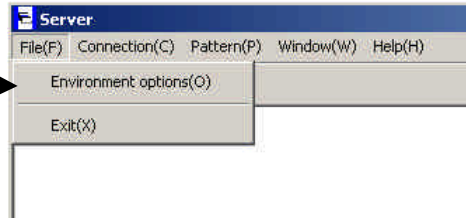


6. Uncheck "Import LMHOSTS". Click OK, then OK to exit TCP/IP settings, then finally CLOSE to close your Network properties. Allow your PC to re-start.

2. Install and set up HAPPYLAN (current version 1.0)
 - a. Install HAPPYLAN from the CD that came with your HAPPY machine.
 - b. Start the HAPPYLAN program (START....PROGRAMS.... HAPPY.... SERVER01).

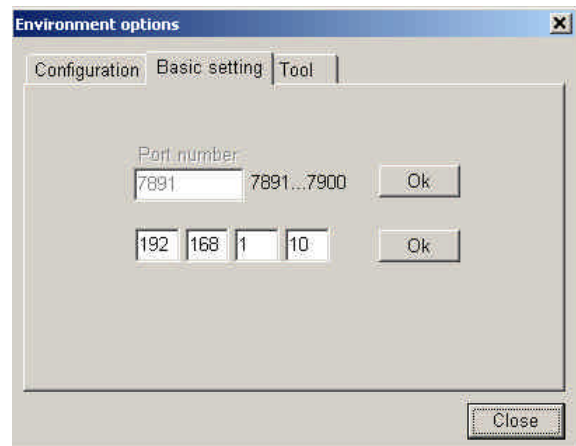
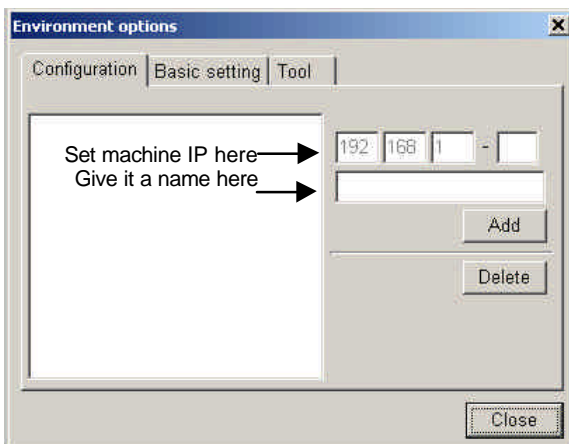
c. Set up HAPPYLAN as shown:

1. In HAPPYLAN, go to File and choose Environment Options as shown on right.



2. **In the Configuration tab** set up each machine: Enter the IP address you gave that machine, give it a name, then click Add. The machines do not need to be online to perform this action.

3. **In the Basic Setting tab** set up the server: Set the IP address to 192.168.1.1 (not 192.168.1.10 as shown)



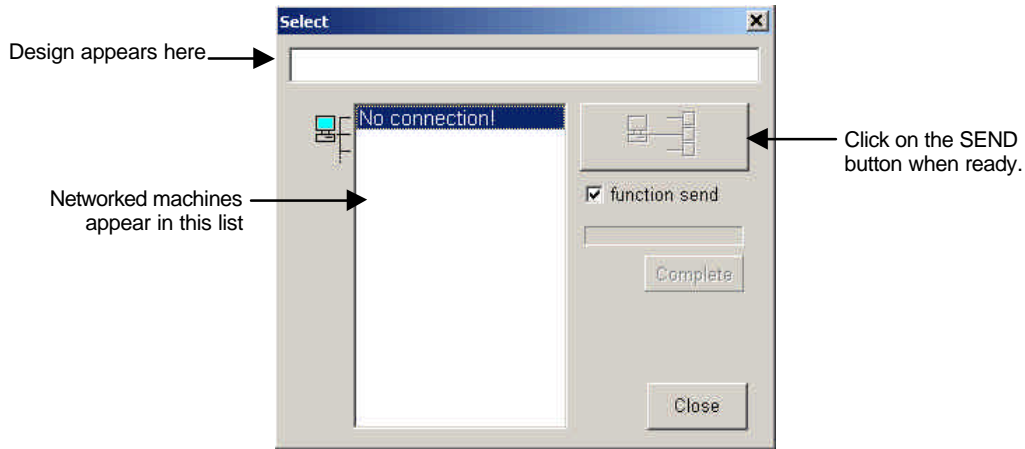
Leave the PC on after these steps and leave HAPPYLAN running to continue to the next step.

FINALLY: FIRE UP THE NETWORK!

1. **Cables and Hub:** Make sure all cables are connected and that the hub/switch has power. (If using a hub make sure crossover switch setting is correct and that the server/client cables are plugged into the correct places. If using a switch this is done automatically).
2. **PC:** If not on already, power on the PC and start the HAPPYLAN program.
3. **Machines:** Turn on an HCS or HCD machine, pressing SET or ENT to allow the initial pantograph/arm centering action. If all is done correctly, a status screen should appear in HAPPYLAN for that machine. Continue powering up each HAPPY machine one by one and you should see a separate status window appear for each machine.

Sending Designs to Each Machine

To send a design to the network: Go to the Pattern screen, highlight a design, and Click on Send. The dialog box below appears:



How far apart can each machine be?

The Category 5 standard states that the total cable run from PC network jack to the LAN jack on the networked device (i.e. embroidery machine) can be up to approximately 100 yards provided that all components of the cable run are up to Category 5 standards.

How many machines can be connected in the network?

Theoretically as many machines can be connected as there are available IP addresses up to 128 machines. Customers have reported 6 machines running well in the field without problems, while between 10 and 15 machines have been successful in manufacturer's tests. There are currently no known reasons that more cannot be networked.

Can I start all the machines from the server PC?

For safety reasons start/stop functions are allowed at each individual machine only.

What are the benefits of the HAPPY network?

Allows you to set up a design with all its settings, color changes then quickly send that same setup to all machines across the network, or just as easily, send multiple designs in different combinations to one or several machines. The LAN software also provides performance reports for each machine to help track productivity throughout the day/week.