
How to Upgrade the program Version for HCS machine.

for RS232C (Ver. 2.** -> Ver. *.**)
(Ver. 3.** -> Ver. *.**)

Contents of sending files:

Below 2files will be distributed

- 2-1. File Title: "hcsinst202. exe" (Software for Version up)
- 2-2. File Title: "Hcs***.bin" (Up dated Machine Program data)

Preparation:

1.Download HCS Update program and HCS program data.

Download files should be saved at C:\WINDOWS\Temp folder at your computer.

File name that you need to download is following.

"hcsinst202.exe" : HCS Update program

"Hcs***.bin" : HCS program data

Note1 : Select and Download the HCS program data depending on your Machine specification.

Download "HCS2**.BIN" in case of frame base of your machine is plastic material.

Download "HCS3**.BIN" in case of frame base of your machine is Metal material.

Note2 : If you are not sure about your machine specification, confirm your machine version on the LCD at the time of power activation. File can be selected depending on your machine version.

Download "HCS2**.BIN" in case of machine version of your machine is HCS Ver A2.**

Download "HCS3**.BIN" in case of machine version of your machine is HCS Ver A3.**

2.After the download please reconfirm those programs are saved at designated folder.

C:\WINDOWS\Temp\hcsinst202.exe

C:\WINDOWS\Temp\hcs***.bin

3. When it has a blank floppy disk.

Copy hcs***.bin saved in C:\WINDOWS\Temp on the floppy disk.

Work becomes easy because a floppy disk is searched for update automatically.

1. Turn the power off of the machine when connecting 232C cable between machine and PC.

2. How to install hcs_updater (Upgraded program for HCS)

Note: Install in the Administrator if you use Windows XP or 2000

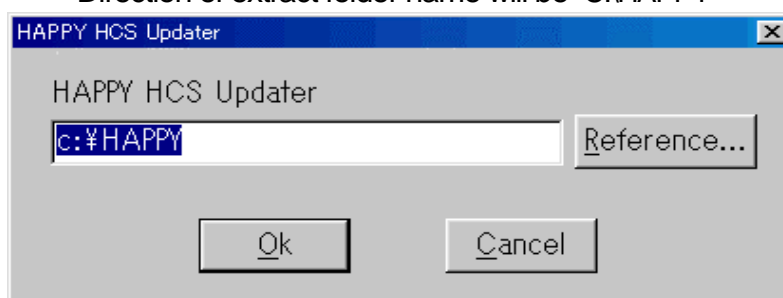
- 2-1. Copy the File Title "hcsinst202. exe" into your PC and execute it.

Execute hcsinst202.exe file at C:\WINDOWS\Temp folder if you have downloaded.

- 2-2. After the execution of "hcsinst202. exe", below window (confirm the direction of extract) will appear so please click OK.

"hcsinst202. exe" will start to extract.

* Direction of extract folder name will be "C:\HAPPY"

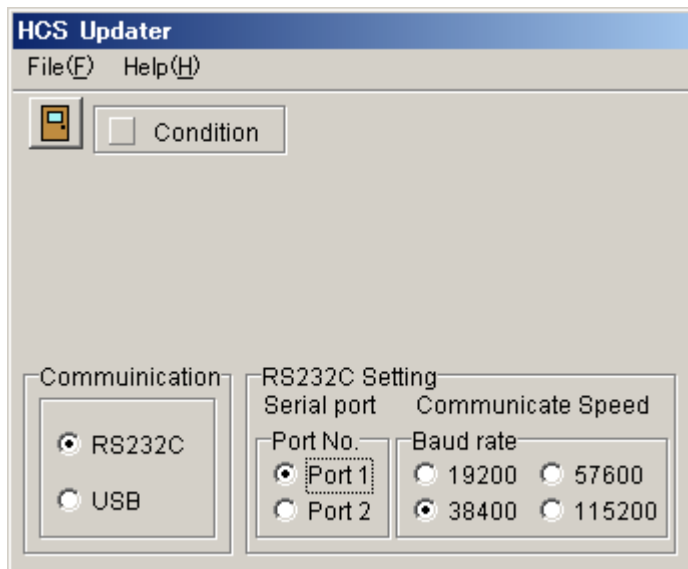


2-3. After the completion of the extract, install software will start up automatically.
Install it according to the Install menu.

After installation completes "HAPPY HCS Updater 2.02" ("hcs_updater") will be added at program list of start menu.

3. Preparation and confirmation

- 3-1 Turn on machine power and go to "Create" menu No.21 to confirm the 232C connection speed. (19200, 38400, 57600, 115200bps)
- 3-2 At PC side, please start hcs_updater software accordingly [START]-[PROGRAM]-[HAPPY HCS Updater 2.02]-[hcs_updater] then set the communication speed matched between machine and PC(232C port setting).



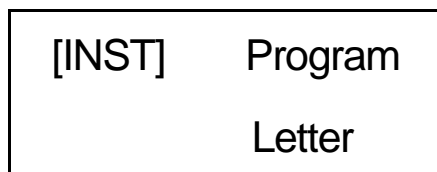
4. How to install the program

- 4-1. Launch hcs_updater at PC side.
- 4-2. Insert the Floppy disk titled "Hcs***.bin". (Up dated Machine Program data) into disk drive unit of PC. You can also copy this into your hard disk but please remember the folder name.

If the program is saved at your computer following message will appear at procedure 4-7 "Floppy disk is not insert". Click cancel then file select dialogue will open.
Select hcs***.bin file at C:\WINDOWS\Temp folder.

Select correct hcs***.bin file by your machine specification(Refer to "**Preparation**")

- 4-3. Turn the machine power on with pressing "ENT" key on the control panel.
- 4-4. At machine control panel, Install menu will be displayed. Set cursor into "Program" with "UP" "DOWN" key.



4-5. Press ENT key and you will hear Buzzer sound 3 times and below message appears for 2-3 second.

Caution !!

Pattern all clr

4-6. After the above "Caution" message has shown for 2-3 second, it will appear confirmation screen below.
Set cursor into OK and press "ENT" key.

[PROG] Cancel

 OK

4-7. Below screen will appear and machine is ready to receive the program data.

Start communication by selecting the sending file "Hcs***.bin" in the PC.

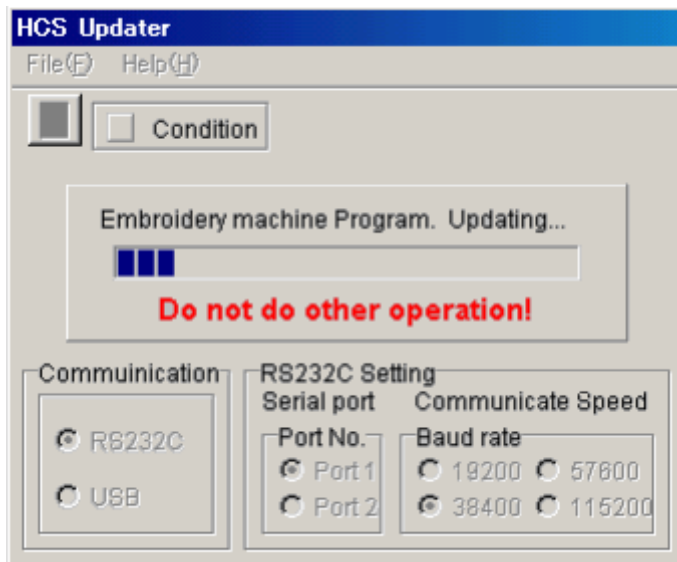
During communication underline will shown at machine side and Space will shown at PC side.

(Reception screen of HCS data)

Install mode

Underline will be shown

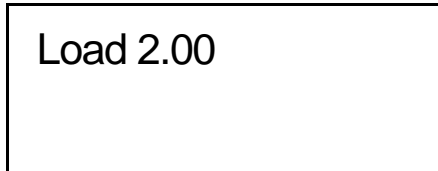
(Below window will be shown at PC side during data is send.)



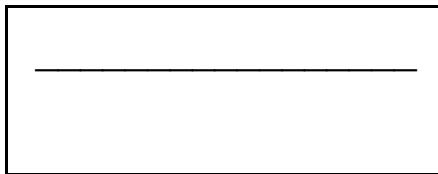
4-8. Program will be written into the machine after receiving the data from PC.

There is no visible display during writing process, only underline will be shown and red light indicates at machine control panel

Note: Do not turn off the machine during writing process, damaged program might produce improper operation.

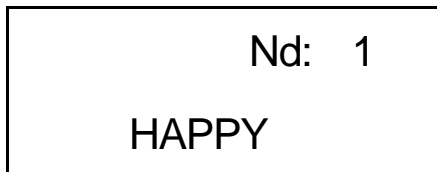


Start writing program data



Underline will be shown and red light indicates at machine control panel during writing processing.

4-9. Once finish the writing process, program will be restarted and Installation will be finished.



4-10. Close the hcs_updater software. Click "File" and select "Exit".

5. After the installation

Please set the speed setting again. If you do not set speed setting again, maximum speed would be 500rpm only. ("Other" ... "Setup" ... "Speed")