

Upgrading the Control Panel ROM program

for HCS- Voyager Comapact Machine (upgrade from V 1.06 -> V 3.02)

Follow the directions on these pages to upgrade the ROM program in the control panel of the Happy HCS1201-30 Voyager machine from 1.06 to 3.02, which allows 290 degree cap field sewing and other changes.

DISCLAIMER

This procedure is NOT recommended by the factory unless the corresponding hardware updates to the machine itself are performed. TEXMAC Inc. assumes no responsibility for damages resulting to the machine if installation is performed in any way different from the factory recommendations.

In the event that installation produces undesirable results, it is recommended that Version 1.06 software be back-installed onto the machine.

1. REQUIREMENTS:

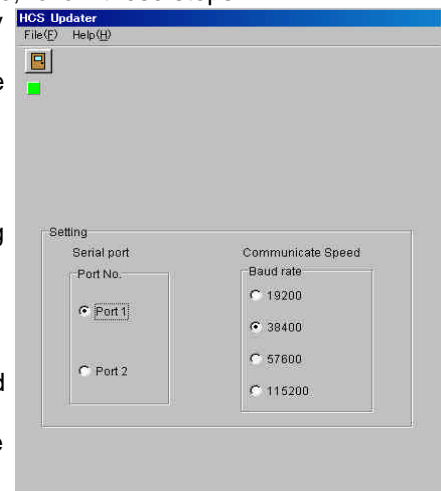
The following are absolutely necessary for performing this update. Please have these ready:

- PC with a SERIAL port
- HCS Voyager machine with Version 1.06.
- HCS Updater Program.** The program that creates the installation files for this program are included in the ZIP file with these instructions. The program is called **HCSinst.exe**.
- HCS Data Files – called **HCS302.bin**. The HCS updater program will use the data in this file to update the control panel. Save this file to floppy disk. The file is about 500Kb, and will fit on a single, PC-formatted 1.44Mb floppy. Make sure floppy is empty before copying this file.

2. PREPARATION

- Install the HCS Updater program on your PC.** To do so, follow these steps:

- Create the installation files on the PC.** Do this by double-clicking the file **HCSinst.exe** discussed above. Follow the prompts to create those files in the directory C:\Happy.
- Install the program.** Use Windows Explorer to go into the directory C:\HAPPY and double-click on the setup.exe program in the directory. When finished, the HCSupdater program can be opened by clicking on START, then ALL PROGRAMS, then HCSupdater. Go ahead and launch the HCS Updater program. You should see a screen that looks like illustration on the right.
- Set up the program.** Set the Port No. to Port 1 and the Baud Rate to 38400. When done, close the Updater program by clicking on the door icon on the upper left.



PREPARATION *Continued*

- b. **Set up a serial cable connection between the HCS machine and a PC:** The update must be sent from a PC to the embroidery machine using a **serial** cable (also called RS-232) . It won't work with a USB cable. If your PC does not have a serial port, as some new PC's do not – you can use any other PC with Windows 98 or above to perform the update. The PC used for this update does not **have** to be done with the PC that you wish to use to send the designs to your HAPPY machine. Follow these steps to set up the serial cable connection:
- i. **Connect machine and cable with serial cable.** This is cable is included with your HAPPY machine. The HAPPY machine and PC may be on or off when you do this, but ensure that the PC is on and booted to the Windows desktop and the HAPPY machine is on and at the default screen showing the design ID and needle number before continuing.
 - ii. **Set the serial (RS232) port speed on the HAPPY machine.** To do so, press the MENU button and use the arrow keys to select the CREATE menu, and find RS232C speed. Set the speed to 38400 if this has not already set at this value.
 - iii. **Set the serial port speed on the PC.** To do so,
 - a. Open the Windows Device Manager. Do so by:
 - i. (Windows XP) clicking on START, then CONTROL PANEL, then SYSTEM. In the System Properties dialog box that appears, click on HARDWARE. In the HARDWARE tab, click on the button labeled DEVICE MANAGER.
 - ii. Or if you have Windows 98 or ME, click on START, then SETTINGS, then CONTROL PANEL. Double-click on SYSTEM. In the System Properties dialog box that appears, click on the Device Manager tab.
 - b. Find the line "Ports (COM & LPT), and open it by clicking on the (+) beside this item.
 - c. Highlight Serial Port (COM1), right-click on it and choose Properties.
 - d. In the Properties dialog box, click on the Port Settings tab.
 - e. Set the Baud Rate (bits per second) to match what you set on your HAPPY machine (38400).
 - f. Close out of the Properties dialog box, device manager and System Properties window.

3. INSTALLING THE UPDATE: 2 STAGES

If you've completed the steps on the previous page, you're now ready to perform the actual update.

Steps to Update

1. **Start the HCS Updater Program.**
2. **Insert the floppy disk** containing the HCS302.bin file (as discussed in step 1a on the previous page).

3. While pressing on the **ENT** button, **power on the HAPPY HCS Voyager machine.** The message shown on the right should now appear on the machine's control panel:

**[INST] Program
Letter**

4. **Choose "Program"** in the control panel and press **ENT**. You'll hear 3 short beeps, and the following message appears as shown on the right.

**Caution !!
Pattern All Clr**

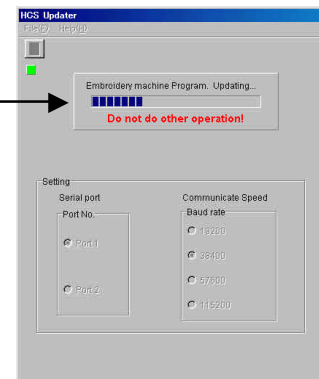
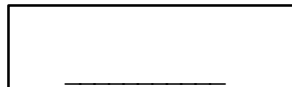
5. **Look for the message shown on the right.** After "Caution: Pattern All Clr!" message flashes for 2-3 seconds, it will follow with this message. Set the cursor to OK and press "ENT" key.

**[PROG] Cancel
OK**

6. **Machine is ready to receive the program data** when screen at the right appears. At this point, go to the HCS Updater program on the PC. A new dialog box will appear that asks you for the new data file. By default it will automatically look at the floppy drive. Follow the update in this order:

Install Mode

- a. **Select HCS302.bin and press ok.** The file transfer will begin. You'll see a progress bar appear as shown on the right until the transfer is complete. This may take 1-5 minutes. Control panel will show a blank line like this, in the meantime:



- b. **Machine Re-start.** Press ENT to perform pantograph check and verify that this message appears.

**Nd 1
HAPPY**

- c. **Re-Initialize Voyager.** Go to **MENU...Other... Setup**. You'll see 2 options: System and Speed. Choose **System** and press ENT. The internal program will re-set itself after several seconds. Next, choose **Speed** and press ENT. A warning message will appear as shown below. The machine will then proceed through a complete speed re-set, turning the main shaft through all possible programmable speeds up to 1000spm, then quit. When finished, re-start Voyager.

**CAUTION!!
Main Shaft Turns**