

# Upgrading the Control Panel ROM program

## for HCS- Voyager Compact Machine (upgrade from V 1.05 -> V 1.06)

Follow the directions on these pages to upgrade the ROM program in the control panel of the Happy HCS1201-30 Voyager machine from 1.05 to 1.06:

### 1. REQUIREMENTS:

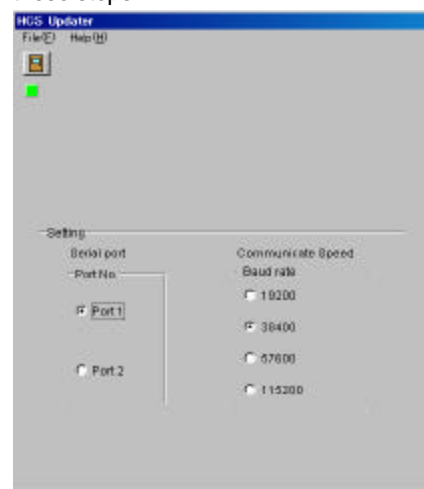
The following are absolutely necessary for performing this update. Please have these ready:

- PC with a SERIAL port
- HCS Updater Program.** The program that creates the installation files for this program is included in the ZIP file with these instructions. The program is called **HCAinst.exe**.
- HCS Data File – called **HCS106.bin**. The HCS updater program will use the data in this file to update the control panel. Save this file to floppy disk.

### 2. PREPARATION

- Install the HCS Updater program on your PC.** To do so, follow these steps:

- Create the installation files on the PC.** Do this by double-clicking the file **HCAinst.exe** discussed above. Follow the prompts to create those files in the directory C:\Happy.
- Install the program.** Use Windows Explorer to go into the directory C:\HAPPY and double-click on the setup.exe program in the directory. When finished, the HCSupdater program can be opened by clicking on START, then ALL PROGRAMS, then HCSupdater. Go ahead and launch the HCS Updater program. You should see a screen that looks like illustration on the right.
- Set up the program.** Set the Port No. to Port 1 and the Baud Rate to 38400. When done, close the Updater program by clicking on the door icon on the upper left.



- Set up a serial cable connection between the HCS machine and a PC:** The update must be sent from a PC to the embroidery machine using a **serial** cable (also called RS-232). It won't work with a USB cable. If your PC does not have a serial port, as some new PC's do not – you can use any other PC with Windows 98 or above to perform the update. The PC used for this update does not **have** to be done with the PC that you wish to use to send the designs to your HAPPY machine. Follow these steps to set up the serial cable connection:
  - Connect machine and cable with serial cable.** This is cable is included with your HAPPY machine. The HAPPY machine and PC may be on or off when you do this, but ensure that the PC is on and booted to the Windows desktop and the HAPPY machine is on and at the default screen showing the design ID and needle number before continuing.
  - Set the serial (RS232) port speed on the HAPPY machine.** To do so, press the MENU button and use the arrow keys to select the CREATE menu, and find RS232C speed. Set the speed to 38400 if this has not already been set at this value.
  - Set the serial port speed on the PC.** To do so,
    - Open the Windows Device Manager. Do so by:
      - (Windows XP) clicking on START, then CONTROL PANEL, then SYSTEM. In the System Properties dialog box that appears, click on HARDWARE. In the HARDWARE tab, click on the button labeled DEVICE MANAGER.
      - Or if you have Windows 98 or ME, click on START, then SETTINGS, then CONTROL PANEL. Double-click on SYSTEM. In the System Properties dialog box that appears, click on the Device Manager tab.
    - Find the line "Ports (COM & LPT), and open it by clicking on the (+) beside this item.
    - Highlight Serial Port (COM1), right-click on it and choose Properties.
    - In the Properties dialog box, click on the Port Settings tab.
    - Set the Baud Rate (bits per second) to match what you set on your HAPPY machine (38400).
    - Close out of the Properties dialog box, device manager and System Properties window.

### 3. INSTALLING THE UPDATE

If you've completed the steps on the previous page, you're now ready to perform the actual update. Do so by following the steps below:

1. **Insert the floppy disk** containing the HCS106.bin file (as discussed in step 1a on the previous page).
2. **Start the HCSupdater program.**
3. While pressing on the **ENT** button, **power on the HAPPY HCS Voyager machine**. The message shown on the right should now appear on the machine's control panel.

**[INST] Program  
Letter**

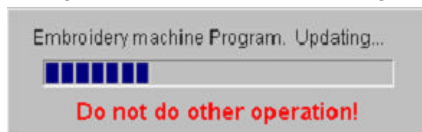
4. **Select Program and press ENT.** Use the arrow keys to select Program. When selected, the message shown on the right should appear.

**Caution !!  
Pattern all Clr**

5. **Press ENT at the confirmation screen shown on the right.** After a few seconds, the message on the right will appear. Use the arrow key to select OK, and press the ENT button.

**[PROG] Cancel  
OK**

6. **Initiate transfer.** When the message shown on the right appears in the control panel, go to the HCS updater program on your PC and choose the HCS106.bin file the your floppy a: drive from step (1) above. Additionally, the HCS updater screen should display this message while the data is transferring:



**Install Mode**

You'll also see the following messages on the H APPY machine:

- This is shown while the program data is being written:

**Load 1.10**

- This is shown during writing/processing.

-----

When the update finishes, the control panel will automatically re-start. When this is finished, you'll see the following message:

**Nd: 1  
HAPPY**

7. **Re-initialize the machine.** At this point, the update is complete. The HCS updater program can be closed. However, before sewing, the machine must be re-initialized or its sewing speed will be limited to 500 s.p.m. To do so, follow these steps.
  - a. **Re-set the control panel program.** To do so,
    - i. Press MENU and use the arrow keys to navigate to Other. Press ENT to select Other.
    - ii. Choose SETUP and press ENT.
    - iii. Choose System and press ENT. Use the arrow keys to choose OK and press ENT.
  - b. **Re-set the sewing speeds.** To do so, continuing from steps (i-iii) above,
    - i. Choose Speed and press ENT. Use the arrows to select OK and press ENT.
    - ii. The message shown on the right will appear. After a few seconds, the main shaft will begin turning slowly, moving the take-up lever (but not the needle) on the active color. It will accelerate to full speed and stop. At this point, the process is finished.

**Caution !! Main Shaft  
Turns**